

CORRIGENDUM - I

for

Tender Notification No.: 24SP021T dated: 16.04.2024

Notice Inviting Tender for the Supply and Fixing of UPVC Windows (Fifth and Sixth Floor) at Chennai Campus of IIM Tiruchirappalli.

Corrigendum/Amendments in the tender document

1. Please refer to the above-mentioned tender document for the Supply and Fixing of UPVC Windows (Fifth and Sixth Floor) at Chennai Campus of IIM Tiruchirappalli.
2. The following changes have been made in the Tender Document through this corrigendum – I

S. No	Reference to the Tender	Amendments
1	Page No. 4	Estimated Cost has been reduced from Rs. 37,00,000/- to Rs. 20,00,000/- (excluding GST)
2	Page No. 1 & 6 Under relevant Earnest Money Deposit (EMD) Clause	EMD amount has been reduced from Rs. 1,85,000/- to Rs. 1,00,000/-
3	Page No. 26-28	Revised Annexure – II (Price Bid – BoQ) is incorporated from the Page 2 of this Corrigendum. Hence the bidder should quote their rate only in the Revised Price Bid as available in this Corrigendum – I and the same has to be placed in Price Bid Cover(i.e Cover 2).
4	Page No. 12 & 13 under Stage 2 of the Technical Evaluation Process	Revised Stage -2 of the Technical Evaluation Process is incorporated under Page 6 of this Corrigendum.
4	Section Drawings is attached for the reference of the bidders under this corrigendum.	

All other points mentioned in the Tender document other than the above Corrigendum will remain the same.

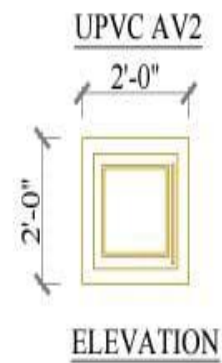
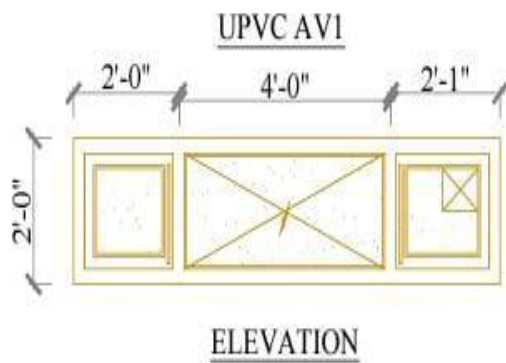
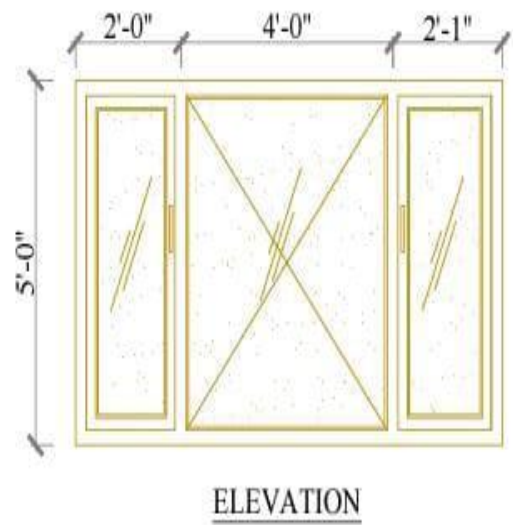
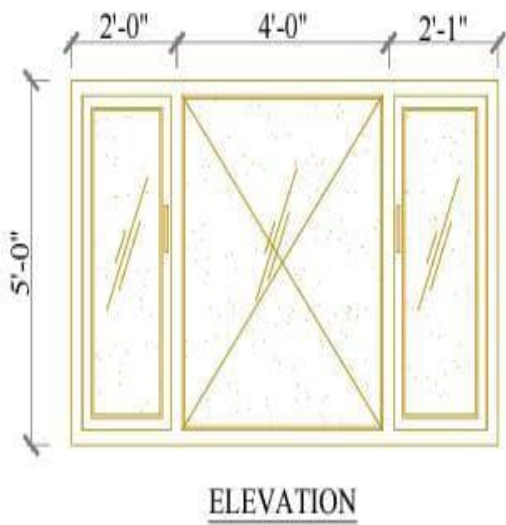
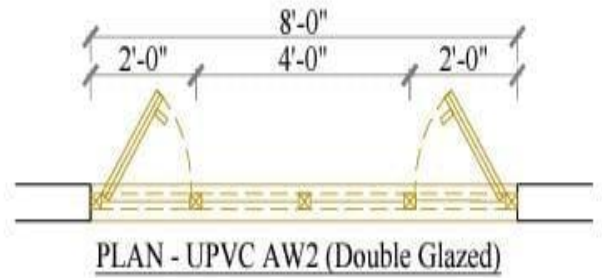
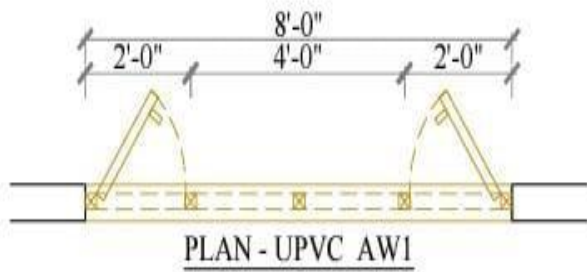
Revised Price Bid – ANNEXURE –II - BOQ

S. No	Description	Qty	Unit	Rate per unit	Total Amount
1	<p>Providing and fixing factory made UPVC Single glazed windows (partially fixed and partially openable shutter as detailed in the drawing) comprising of lead free uPVC multi-chambered frame, sash and mullion (where ever required) extruded profiles having minimum wall thickness of 1.70 mm for series R1 and R2 profiles and 2.10 mm for series R3 and R4 profiles confirming to EN:12608 in any shape, colour and design duly reinforced with galvanized mild steel section made of required shape & size as per CPWD specification, uPVC extruded glazing beads, interlocks and inline sash adaptor (where ever required) of appropriate dimension, EPDM gasket, hardware, SS 304 grade fasteners of minimum dia 8mm with countersunk head, comprising of matching polyamide PA6 grade sleeve for fixing frame to finished wall as per IS 1367: Part 1 to 1, plastic packers, plastic caps and necessary stainless steel screws etc. Profile on frame, sash & mullion (if required) shall be mitred cut and fusion welded/mechanically jointed duly sealed at all corners, including drilling of holes for fixing hardware and drainage of water etc. After fixing frame the gap between frame and adjacent finished wall shall be filled with weather proof silicon sealent over backer rod of approved size and quality, inclusive of necessary cementing works, all complete as per approved drawing conforming to CPWD specification & direction of Engineer-in-charge. Section of steel reinforcement and cross section of UPVC profiles to be as per design approved by Engineer-in-charge. Casement cum fixed panel window having single casement panel at both ends & middle fixed panel with SS 304 friction hinges as per size and weight of sash, multi-point locking system, zinc alloy (Zamak) powder coated handles. Using R4 series with frame (64 mm & above) x (50mm & above) & sash (64mm & above) x(70mm & above) & mullion (64 mm & above) x (70mm & above) and Providing and fixing glazing with float glass panes of 5 mm thickness (weight not less than 12.50 kg/sqm)(Single glazing) in UPVC window with EPDM rubber / neoprene gasket etc. complete as per the architectural drawings and the directions of engineer-in-charge.</p>	150	Sq.m		

2	<p>Providing and fixing factory made UPVC Double glazed windows to ensure sound proof against exterior noise (partially fixed and partially openable shutter as detailed in the drawing) comprising of lead free uPVC multi-chambered frame, sash and mullion (where ever required) extruded profiles having minimum wall thickness of 1.70 mm for series R1 and R2 profiles and 2.10 mm for series R3 and R4 profiles confirming to EN:12608 in any shape, colour and design duly reinforced with galvanized mild steel section made of required shape & size as per CPWD specification, uPVC extruded glazing beads, interlocks and inline sash adaptor (where ever required) of appropriate dimension, EPDM gasket, hardware, SS 304 grade fasteners of minimum dia 8mm with countersunk head, comprising of matching polyamide PA6 grade sleeve for fixing frame to finished wall as per IS 1367: Part 1 to 1, plastic packers, plastic caps and necessary stainless steel screws etc. Profile on frame, sash & mullion (if required) shall be mitred cut and fusion welded/mechanically jointed duly sealed at all corners, including drilling of holes for fixing hardware and drainage of water etc. After fixing frame the gap between frame and adjacent finished wall shall be filled with weather proof silicon sealent over backer rod of approved size and quality, inclusive of necessary cementing works, all complete as per approved drawing conforming to CPWD specification & direction of Engineer-in-charge. Section of steel reinforcement and cross section of UPVC profiles to be as per design approved by Engineer-in-charge. Casement cum fixed panel window having single casement panel at both ends & middle fixed panel with S.S 304 hinges as per size and weight of sash, multi point locking system, zinc alloy (zamak) powder coated handles. Using R4 series with frame (64mm & above) x (50mm & above) & sash (64mm & above) x (70mm & above) & mullion (64mm & above) x (70mm & above) and Providing and fixing glazing with float glass panes of 5 mm thickness (weight not less than 12.50 kg/sqm)(Double glazing) in UPVC window with EPDM rubber / neoprene gasket etc. complete as per the architectural drawings and the directions of engineer-in-charge.</p>	130	Sq.m		
---	-------------------------------------------------------------------------------------------------------------------------------------------------------------------------------------------------------------------------------------------------------------------------------------------------------------------------------------------------------------------------------------------------------------------------------------------------------------------------------------------------------------------------------------------------------------------------------------------------------------------------------------------------------------------------------------------------------------------------------------------------------------------------------------------------------------------------------------------------------------------------------------------------------------------------------------------------------------------------------------------------------------------------------------------------------------------------------------------------------------------------------------------------------------------------------------------------------------------------------------------------------------------------------------------------------------------------------------------------------------------------------------------------------------------------------------------------------------------------------------------------------------------------------------------------------------------------------------------------------------------------------------------------------------------------------------------------------------------------------------------------------------------------------------------------------------------------------------------------------------------------------------------------------------------------------------------------------------------------------------------------------------------------------------------------------------------------------------------------------------------------------------------------------------------------------------------------------------------------------------------------------------------------------------------------------------------------------------------------------------------	-----	------	--	--

3	<p>Providing and fixing factory made UPVC single glazed ventilators comprising of lead free uPVC multi-chambered frame, sash and mullion (where ever required) extruded profiles having minimum wall thickness of 1.70 mm for series R1 and R2 profiles and 2.10 mm for series R3 and R4 profiles confirming to EN:12608 in any shape, colour and design duly reinforced with galvanized mild steel section made of required shape & size as per CPWD specification, uPVC extruded glazing beads, interlocks and inline sash adaptor (where ever required) of appropriate dimension, EPDM gasket, hardware, SS 304 grade fasteners of minimum dia 8mm with countersunk head, comprising of matching polyamide PA6 grade sleeve for fixing frame to finished wall as per IS 1367: Part 1 to 1, plastic packers, plastic caps and necessary stainless steel screws etc. Profile on frame, sash & mullion (if required) shall be mitred cut and fusion welded/mechanically jointed duly sealed at all corners, including drilling of holes for fixing hardware and drainage of water etc. After fixing frame the gap between frame and adjacent finished wall shall be filled with weather proof silicon sealent over backer rod of approved size and quality, inclusive of necessary cementing works, all complete to ensure sound proof as per approved drawing conforming to CPWD specification & direction of Engineer-in-charge. Section of steel reinforcement and cross section of UPVC profiles to be as per design approved by Engineer-in-charge. Fixed ventilator using R1 series with frame (33mm & above) x (35mm & above) and Providing and fixing glazing with float glass panes of 5 mm thickness (weight not less than 12.50 kg/sqm)(Single glazing) in UPVC ventilator with EPDM rubber / neoprene gasket etc. complete as per the architectural drawings and the directions of engineer-in-charge .</p>	24	Sq.m		
<p>Total amount including Supply, lifting, laying, Fixing, Labour, materials, glazing, stainless steel wire gauge, window hardware and Packing, Loading, Unloading, Transportation and freight, etc. all complete and excluding GST</p>					

SECTION DRAWING



Technical Evaluation Process

Stage 2: Technical Evaluation The information provided in the technical bid will be used for understanding and assessing/evaluating the quality of solution being proposed by the Bidder. Technical evaluation of the Bidder will depend on the information provided herein by the committee members. Technical bid score, out of 100, will be arrived based on the following Parameters:

Sl. No	Items	Maximum Marks
1	<p>Financial Soundness/Turnover: The average turnover of the last three years (2020-21 to 2022-23), as reported in the audited financial statements, will be considered.</p> <p>a. Rs.20.01 Lakhs to 25 Lakhs = 2.5 marks; b. Rs.25.01 to 30 Lakhs = 5 marks; c. Rs.30.01 to 40 Lakhs = 7.5 marks; d. Rs.40.01 Lakhs and above =10 marks.</p>	10
2	<p>Work Experience (Supply, Fixing of UPVC Window) in the last five years as of 31st March 2024: Three Work orders for Rs. 8 Lakhs – 12.99 lakhs – 5 Marks Two Work orders for Rs. 13.00 Lakhs – 17.99 Lakhs– 7 Marks Single Work order for Rs. 18 Lakhs and above – 10 Marks The completion certificate along with the work order should be attached. <i>(Any Completion Certificate without a work order copy, contact details, and not in letterhead would not be considered)</i></p>	25
3	<p>Completion Schedule of work in time (from start to End). The schedule should be enclosed with the Technical bid documents. Site Visit is mandatory. The bidder should mention the date of site visit in the schedule.</p>	15
5	<p>Evaluation of the Capabilities: The following documents are to be submitted by the bidder for the evaluation of IIM Tiruchirappalli Committee members. The evaluation shall be based on the following parameters:</p> <p>a. Bidder's understanding of IIMT's requirements (Concept Note). b. Experience in Similar projects; c. Feedback from previous Clients regarding timely completion of work, if any. d. Photos/Videos of previous works with the name of the work and location.</p>	50
Total Marks (Technical Score)		100